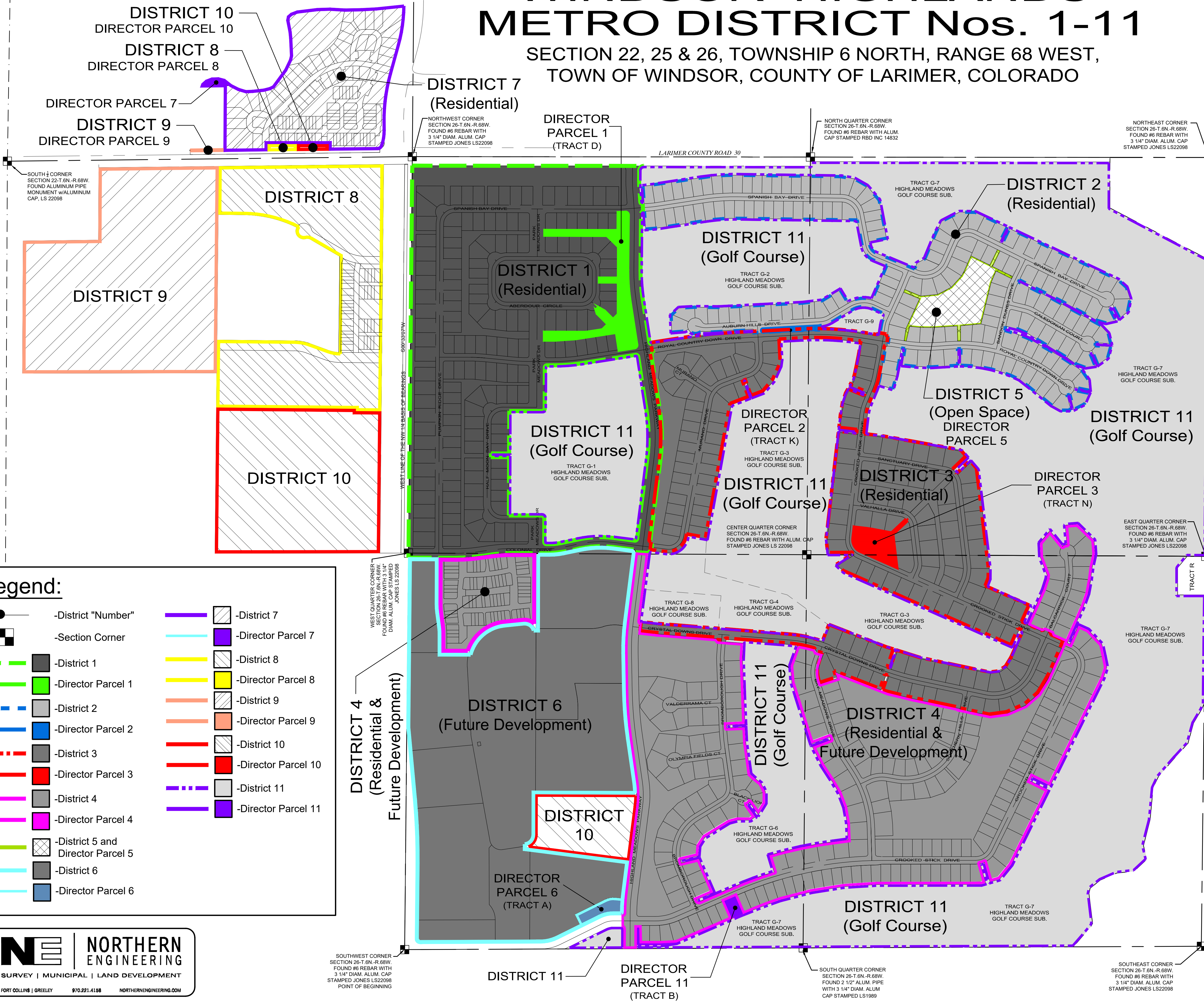


# WINDSOR HIGHLANDS METRO DISTRICT Nos. 1-11

SECTION 22, 25 & 26, TOWNSHIP 6 NORTH, RANGE 68 WEST,  
TOWN OF WINDSOR, COUNTY OF LARIMER, COLORADO

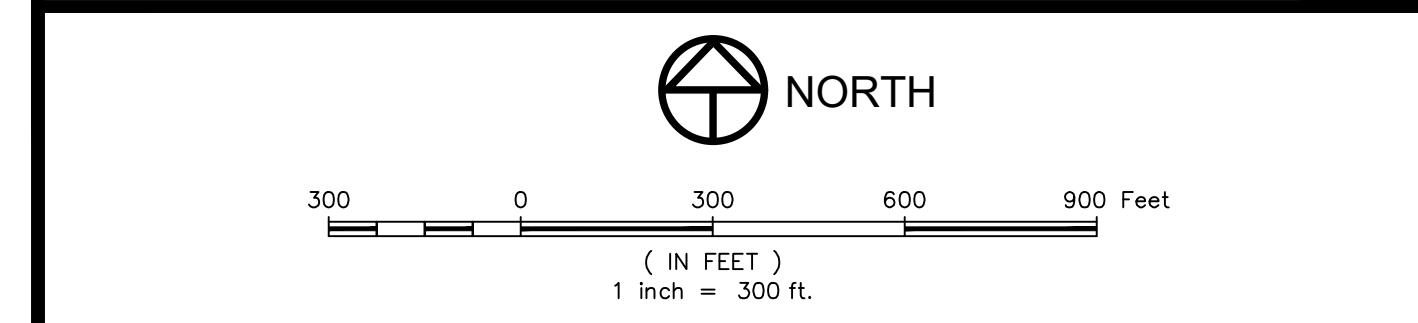
## District Acreage:

WINDSOR HIGHLANDS LAND DISTRIBUTION TABLE			
PARCEL	SF	AC	% OF TOTAL
DISTRICT 1	3,139,059	72.063	10.05
DISTRICT 2	1,861,896	42.743	5.96
DISTRICT 3	2,537,532	58.254	8.12
DISTRICT 4	4,201,486	96.453	13.45
DISTRICT 5	159,547	3.663	0.51
DISTRICT 6	3,089,735	70.931	9.89
DISTRICT 7	802,417	18.421	2.57
DISTRICT 8	1,155,423	26.525	3.70
DISTRICT 9	1,526,914	35.053	4.89
DISTRICT 10	1,316,255	30.217	4.21
DISTRICT 11	11,448,926	262.831	36.65
SUM =	31,239,190	717.153	100.00
DIRECTOR PARCEL 1	109,709	2.519	0.35
DIRECTOR PARCEL 2	9,842	0.226	0.03
DIRECTOR PARCEL 3	49,788	1.143	0.16
DIRECTOR PARCEL 4	N/A	N/A	N/A
DIRECTOR PARCEL 5	159,547	3.663	0.51
DIRECTOR PARCEL 6	32,467	0.745	0.10
DIRECTOR PARCEL 7	6,194	0.142	0.02
DIRECTOR PARCEL 8	4,791	0.110	0.02
DIRECTOR PARCEL 9	923	0.021	0.00
DIRECTOR PARCEL 10	4,747	0.109	0.02
DIRECTOR PARCEL 11	21,388	0.491	0.07

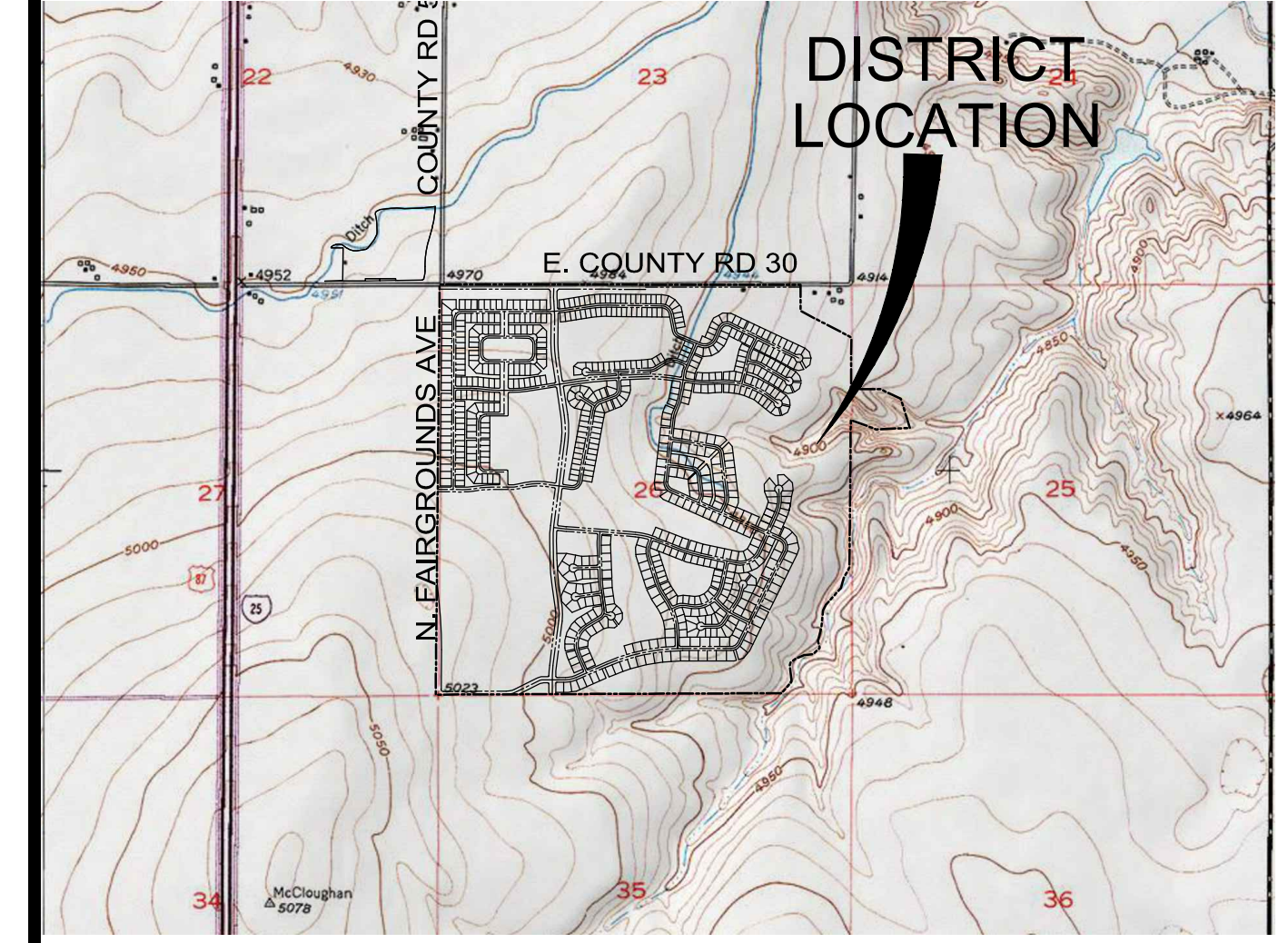


**Legend:**

- District "Number"
- Section Corner
- District 1
- Director Parcel 1
- District 2
- Director Parcel 2
- District 3
- Director Parcel 3
- District 4
- Director Parcel 4
- District 5 and Director Parcel 5
- District 6
- Director Parcel 6
- District 7
- Director Parcel 7
- District 8
- Director Parcel 8
- District 9
- Director Parcel 9
- District 10
- Director Parcel 10
- District 11
- Director Parcel 11



December, 2023



VICINITY MAP  
N.T.S.

# WINDSOR HIGHLANDS

Metropolitan District Nos. 1-11

# DISTRICT MAP

FILENAME: SURVEY\_A09201101.DWG DATE: 12/21/2023 10:01:01 AM

**NE** NORTHERN ENGINEERING  
SURVEY | MUNICIPAL | LAND DEVELOPMENT  
FORT COLLINS | GREELEY 970.221.4188 NORTHERNENGINEERING.COM

SOUTHWEST CORNER SECTION 26-T.6N.-R.68W. FOUND #6 REBAR WITH 3 1/4" DIAM. ALUM. CAP STAMPED JONES LS22098 POINT OF BEGINNING

DISTRICT 11 DIRECTOR PARCEL 11 (TRACT B)

SOUTH QUARTER CORNER SECTION 26-T.6N.-R.68W. FOUND 2 1/2" ALUM. PIPE WITH 3 1/4" DIAM. ALUM. CAP STAMPED LS1989

SOUTHEAST CORNER SECTION 26-T.6N.-R.68W. FOUND #6 REBAR WITH 3 1/4" DIAM. ALUM. CAP STAMPED JONES LS22098